

# VT Department of Corrections:

## Sentenced Only Population- Minimum Release Report 8/31/2020

This report contains point-in-time analyses that are up-to-date as of 10pm on the date listed. The information in this report includes incarcerated individuals who were sentenced for their crime(s), without detained or hold status(es), in Vermont in-state and out-of-state facilities. See below and the next two pages for an explanation of the information contained in this report.

### Incarcerating Individuals Past Minimum Release Reasons:

**Convicted offenders are sentenced to serve a minimum and maximum term by the court for each crime they commit. Individuals may be housed past their minimum release date but must be released by their maximum release date. Individuals with a "sentenced only" booking status (without detained, hold status) are eligible for release by the authority of the Commissioner of Corrections. All other booking statuses require action by another authority (such as the court) for release. See below for explanations/examples of reasons why someone might be housed past their minimum release date.**

**Furlough Violation/Inappropriate for Furlough:** Returned from community supervision for a fixed length of time due to a technical violation, or "interrupting" release to furlough due to individual's behavior/risk to community

**Graduated Sanction:** Short term incarceration in response to technical violations that allow for continuation in completing community sentence

**Hold for US Marshals/Other State:** Held in VT facilities until under appropriate federal/state jurisdiction

**Incomplete Programming:** Required programming in progress, pending start, or termination/suspension due to behavior issues

**Lack of Housing:** No appropriate housing upon entry into the community

**Pending Other Charge(s):** Ex: Violation of supervision that results in new charge

**Refusing Furlough/Mandated Services:** Refusing services required by sentence or furlough placement

**Scheduled for Release at Max Date:** Due to concerns for safety of community, scheduled to release at maximum end date

**Violent Crime/Inappropriate for Release:** Offenders who committed violent crime(s) and are unsafe for release to community

# VT Department of Corrections:

## Sentenced Only Population- Minimum Release Report 8/31/2020

This report contains point-in-time analyses that are up-to-date as of 10pm on the date listed. The information in this report only pertains to incarcerated individuals who were sentenced for their crime(s), without detained or hold status(es), in Vermont in-state and out-of-state facilities. Along with the information from the previous page, see below and the next page for an explanation of the information contained in this report.

### Booking Statuses:

**The following list describes the booking status for individuals incarcerated in VT correctional facilities (either in-state or out-of-state). Booking Status indicates the individual's circumstance relative to their court case.**

#### Sentenced Statuses:

- Sentenced: convicted of crime(s)
- Sentenced/Detained: convicted of crime(s) and held pre-trial for other crime(s)
- Sentenced W/Hold: convicted of crime(s) and held for US Marshals or other jurisdiction
- Sentenced/Detained W/Hold: (rare) convicted of crime(s), held pre-trial for other crime(s), and held for US Marshals or other jurisdiction

#### Detained Statuses:

- Detained: awaiting conviction for crime(s)
- Detained W/Hold: awaiting conviction for crime(s) and held for US Marshals or other jurisdiction

#### Hold Status:

Hold: being held for US Marshals or other jurisdiction

**NOTE: Individuals in each booking status are considered in the custody of the Commissioner of Corrections. The Commissioner has authority to make release decisions for incarcerated individuals with a "sentenced only" booking status consistent with the law and taking public safety into consideration. All other booking statuses require action by another authority (e.g. the court), to release a person from incarceration.**

# VT Department of Corrections:

## Sentenced Only Population- Minimum Release Report 8/31/2020

This report contains point-in-time analyses that are up-to-date as of 10pm on the date listed. The information in this report only pertains to incarcerated individuals who were sentenced for their crime(s), without detained or hold status(es), in Vermont in-state and out-of-state facilities. Along with the information from the previous pages, see below for an explanation of the information contained in this report.

### Risk to Reoffend:

The VT DOC utilizes the Ohio Risk Assessment System (ORAS) to determine an offender's risk to reoffend or commit another crime. This measure is used for individuals being housed in correctional facilities and those under community supervision. The department uses the following instruments:

#### Prison Intake Took (PIT):

Provided to all incarcerated individuals sentenced to a year or longer in a correctional facility. Informs risk reduction programming (RRP) eligibility. 4 levels of risk, with scores varying by gender: Low, Moderate, High, Very High

#### Community Supervision Tool (CST):

Administered to offenders under community supervision: within 2 weeks of intake, 3 months after release from incarceration to community supervision, and/or annually and/or upon significant changes in community status. 4 levels of risk, with scores varying by gender: Low, Moderate, High, Very High

#### Reentry Tools:

Administered to incarcerated individuals sentenced to a year or longer. Provided within 6-8 weeks before being released to the community. 3 levels of risk, with scores varying by gender: Low, Moderate, High

### Crime Types:

Incarcerated individuals are classified into different Crime Types based on the most serious crime for which they are sentenced, detained, or held. For example, 01:Fel./Serious. The number (e.g., 01) indicates the severity of the crime ranked from 01-11 from most severe to least severe. Next, the Crime Type displays whether the most serious crime was a felony (Fel.) or misdemeanor (Misd.). Finally, the category of crime is provided (e.g., Serious). See below for examples of each Crime Type. Each individual is counted once in the crime type data.

#### Crime Type Examples:

**01:Fel./Serious:** Aggravated Assault, Aggravated Sexual Assault, Murder

**02:Fel./Person:** Assault and Robbery, Lewd and Lascivious

**03:Fel./Property:** Burglary Occupied, Grand Larceny, Arson

**04:Fel./Drug:** Dealing, Trafficking, Possession and Sale

**05:Fel./MotorV:** DUI 3 or more

**06:Fel./Other:** Obstruction of Justice, Fugitive

**07:Misd./Person:** Domestic Assault, Simple Assault

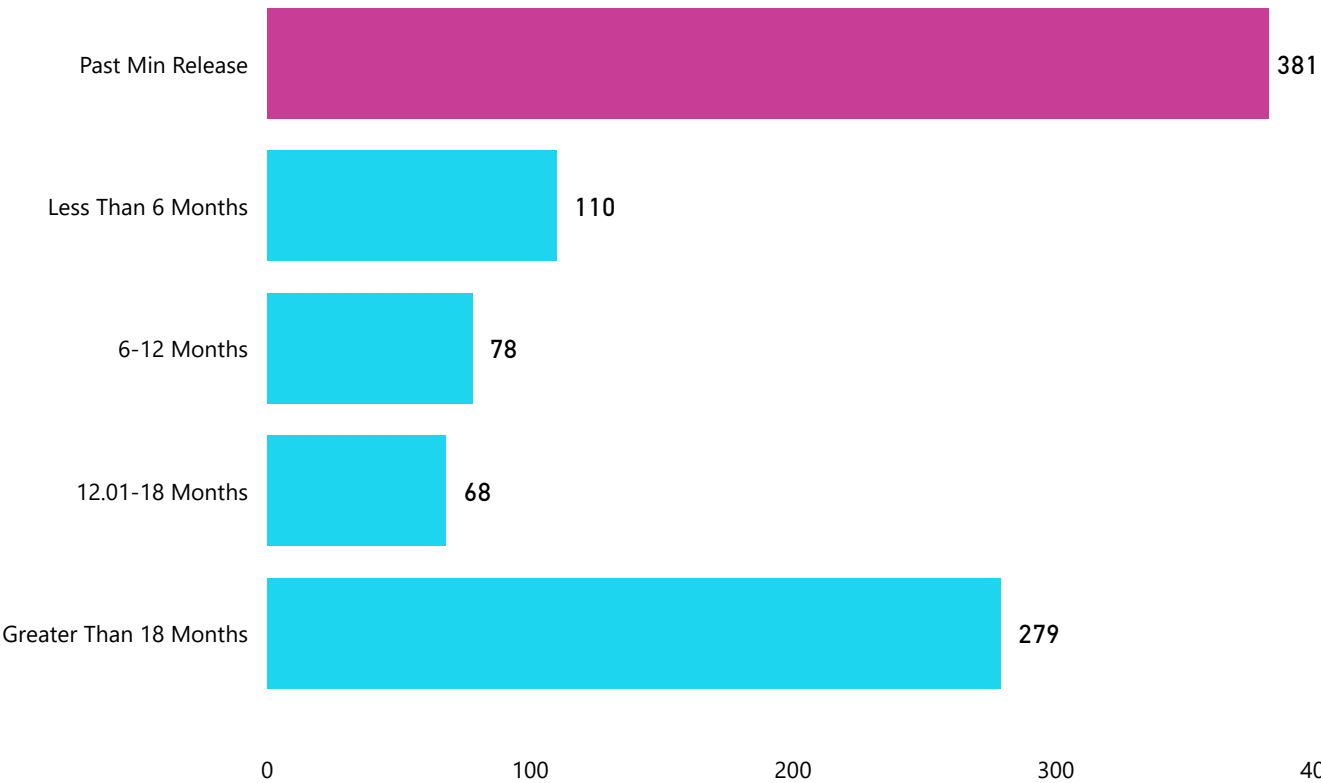
**08:Misd./Property:** Unlawful Trespass, Retail Theft

**09:Misd./Drug:** Possession of drugs

**10:Misd./MotorV:** Careless and Negligent Operation

**11:Misd./Other:** Violations Conditions of Release

Sentenced Only Population: Time to Minimum Release Date (N=916)



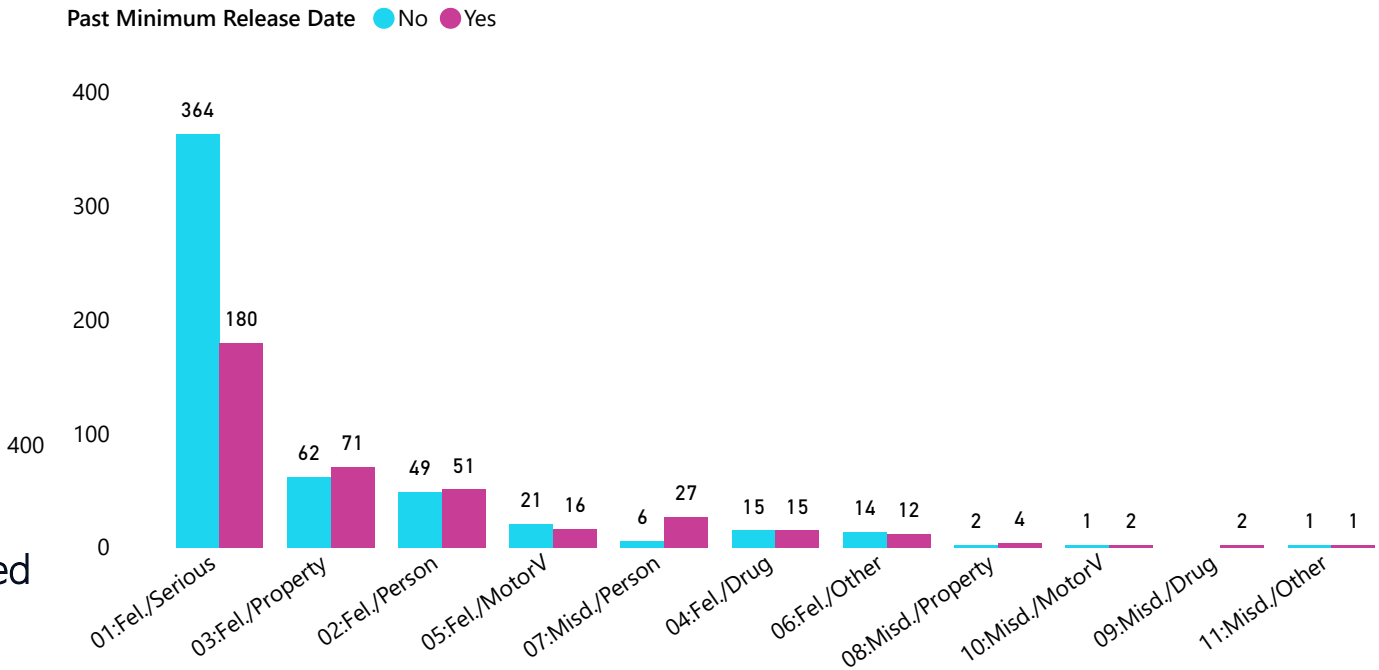
**381** Sentenced only (no detained, hold status) individuals were incarcerated past their minimum release date

These were derived from:

- 1,413** Total incarcerated population (includes in-state & out-of-state)
- 1,044** Total individuals with a sentenced status
- 916** Sentenced only individuals (no detained, hold status)
- 381** Sentenced only individuals housed past minimum release

# VT Department of Corrections: Sentenced Only Population Minimum Release Report 8/31/2020\*

Sentenced Only Population: Crime Type by Past Minimum Release Status (N=916)



Crime Type Examples:

- 01:Fel./Serious: Aggravated Assault, Aggravated Sexual Assault, Murder

02:Fel./Person: Assault and Robbery, Lewd and Lascivious

03:Fel./Property: Burglary Occupied, Grand Larceny, Arson

04:Fel./Drug: Dealing, Trafficking, Possession and Sale

05:Fel./MotorV: DUI3 or more

06:Fel./Other: Obstruction of Justice, Fugitive
- 07:Misd./Person: Domestic Assault, Simple Assault

08:Misd./Property: Unlawful Trespass, Retail Theft

09:Misd./Drug: Possession of drugs

10:Misd./MotorV: Careless and Negligent Operation

11:Misd./Other: Violations Conditions of Release

\*Note: Daily Counts are accurate as of 10pm on the date listed.

# VT Department of Corrections: Sentenced Only Population Minimum Release Report 8/31/2020\*

Sentenced Only Population: Reason for Incarceration Past  
Minimum Release Date (N=381)

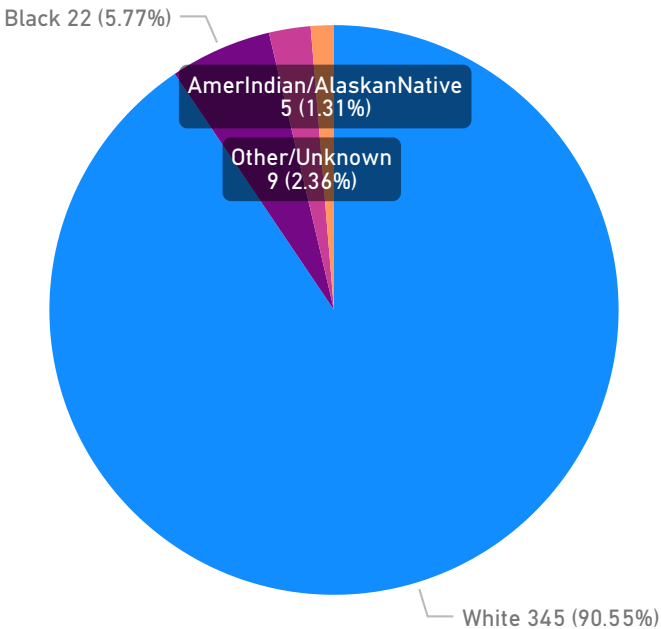
Reason	Count	Percent
Furlough Violation/Inappropriate for Furlough	148	38.8%
Incomplete Programming	82	21.5%
Lack of Housing	66	17.3%
Pending Other Charge(s)	31	8.1%
Refusing Furlough/Mandated Services	27	7.1%
Scheduled for Release at Max Date	15	3.9%
Violent Crime- Inappropriate for Release	8	2.1%
Hold for US Marshals/Other State	4	1.0%
<b>Total</b>	<b>381</b>	<b>100.0%</b>

39%  
Of sentenced only (no  
detained, hold status)  
inmates housed past  
minimum release was  
due to Furlough  
Violation/ Inappropriate  
for Furlough

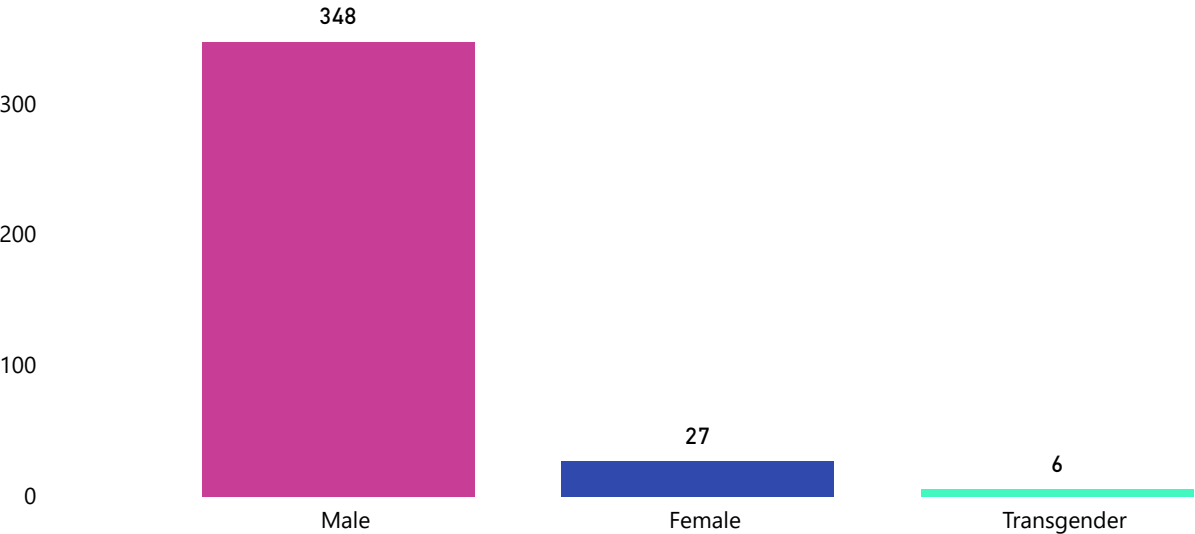
This table contains reasons for incarceration past minimum release date. For definitions/examples of these reasons, please see page 1 of this report.

\*Note: Daily Counts are accurate as of 10pm on the date listed.

Sentenced Only Population: Housed Past Minimum Release by Race (N=381)



Sentenced Only Population: Housed Past Minimum Release by Gender (N=381)



# VT Department of Corrections:

## Sentenced Only Population Minimum Release Report 8/31/2020\*

Sentenced Only Population: Crime Type by Risk to Reoffend Level (N=381)

45%

Sentenced only (no detained, hold status) inmates housed past their minimum release date have a High or Very High Risk to Reoffend

ORAS Score	LOW		MODERATE		HIGH/VERY HIGH		NO SCORE AVAILABLE		Total	
Crime Type	Count	Percent	Count	Percent	Count	Percent	Count	Percent	Count	Percent
01:Fel./Serious	18	10.0%	86	47.8%	75	41.7%	1	0.6%	180	100.0%
02:Fel./Person	3	5.9%	24	47.1%	24	47.1%			51	100.0%
03:Fel./Property	7	9.9%	25	35.2%	38	53.5%	1	1.4%	71	100.0%
04:Fel./Drug			8	53.3%	7	46.7%			15	100.0%
05:Fel./MotorV	4	25.0%	6	37.5%	6	37.5%			16	100.0%
06:Fel./Other			6	50.0%	6	50.0%			12	100.0%
07:Misd./Person	1	3.7%	12	44.4%	13	48.1%	1	3.7%	27	100.0%
08:Misd./Property			2	50.0%	2	50.0%			4	100.0%
09:Misd./Drug			1	50.0%	1	50.0%			2	100.0%
10:Misd./MotorV	1	50.0%					1	50.0%	2	100.0%
11:Misd./Other			1	100.0%					1	100.0%
<b>Total</b>	<b>34</b>	<b>8.9%</b>	<b>171</b>	<b>44.9%</b>	<b>172</b>	<b>45.1%</b>	<b>4</b>	<b>1.0%</b>	<b>381</b>	<b>100.0%</b>

### Crime Type Examples:

01:Fel./Serious: Aggravated Assault, Aggravated Sexual Assault, Murder  
 02:Fel./Person: Assault and Robbery, Lewd and Lascivious  
 03:Fel./Property: Burglary Occupied, Grand Larceny, Arson  
 04:Fel./Drug: Dealing, Trafficking, Possession and Sale  
 05:Fel./MotorV: DUI3 or more  
 06:Fel./Other: Obstruction of Justice, Fugitive  
 07:Misd./Person: Domestic Assault, Simple Assault  
 08:Misd./Property: Unlawful Trespass, Retail Theft  
 09:Misd./Drug: Possession of drugs  
 10:Misd./MotorV: Careless and Negligent Operation  
 11:Misd./Other: Violations Conditions of Release

### Risk to Reoffend (ORAS Score):

Risk to Reoffend information includes sentenced only individuals who have a risk assessment completed for their current arrest. *High* and *Very High* categories were combined for cohesion across risk assessment tools. Individuals with No Score either do not qualify to be tested or do not yet have one due to the timing of their incarceration. See page 3 of this report for a description of Risk to Reoffend measures utilized by the DOC.

\*Note: Daily Counts are accurate as of 10pm on the date listed.