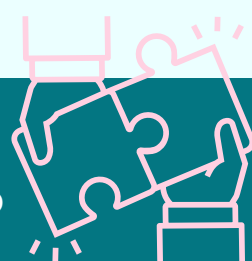
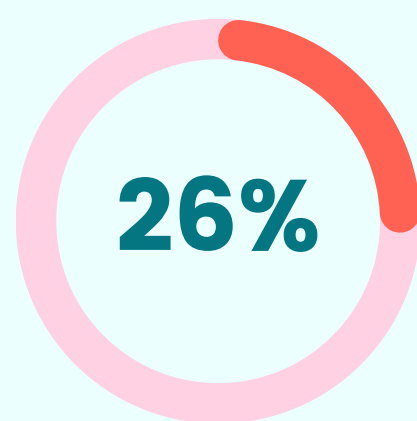


# Medication-Assisted Treatment (MAT): Continuity of Care

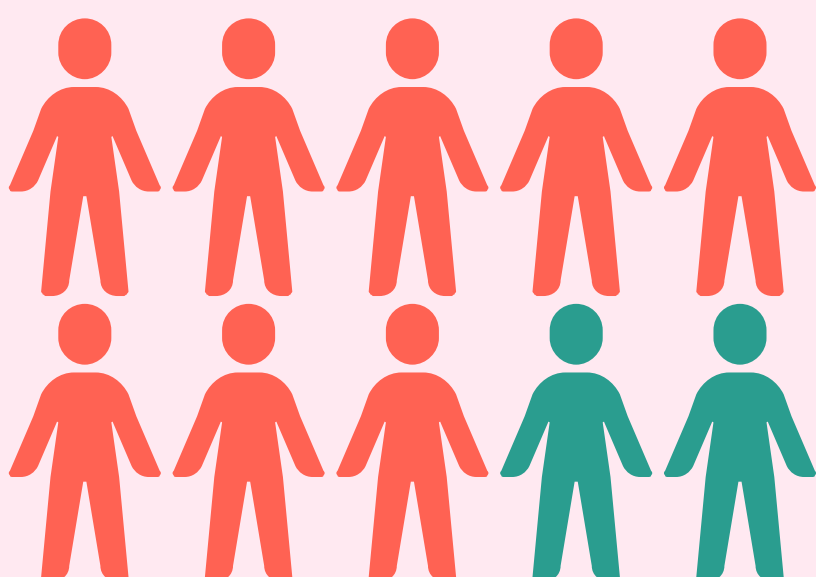


Act 176, effective July 1, 2018, directs Vermont correctional facilities to provide medication-assisted treatment (MAT) to incarcerated individuals for as long as medically necessary. Beginning in 2019, the Vermont Department of Corrections (VTDOC) and Department for Vermont Health Access (DVHA) collaborated to perform a longitudinal survivor study. Using Medicaid claims data, DVHA matched individuals who received MAT while incarcerated and were then released to analyze engagement and continuity of care post release in the community. Note: Only individuals who were enrolled in Medicaid are included in these analyses. The vast majority of those incarcerated at the VTDOC are eligible for Medicaid upon release.

Of those released from incarceration from 2019–2022, **about a quarter** had a release date within the same year they received MAT while incarcerated (26%).



Individuals who received MAT within a year of their release were twice as likely to be sentenced than detained awaiting trial.



Almost **8 out of 10** of those who had received MAT within a year of their release received **Buprenorphine** while incarcerated (78%).

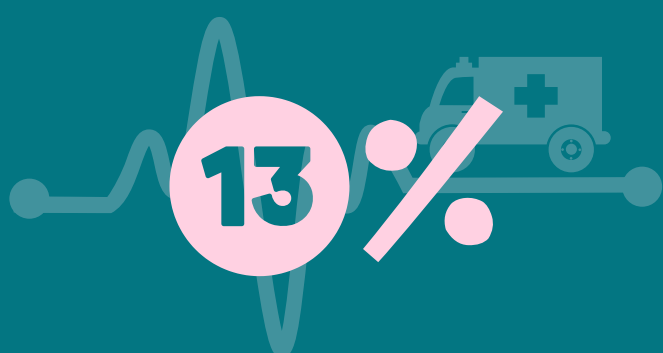
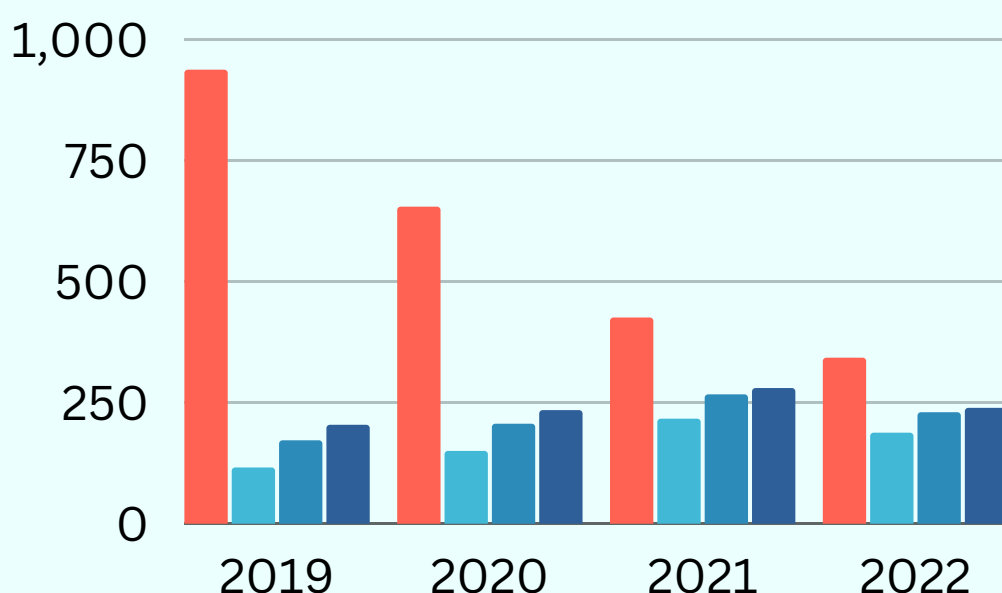
Almost three quarters of those who received MAT within a year of release were released to community supervision (73%).

## Continuity of Care

In 2022, 70% of those who had received MAT within their year of release received treatment in the community within 45 days of release.

This level of medication adherence is uncommon. Frequently, medication adherence in chronic diseases is low (see [Elsevier](#), [PubMed](#), [QJM](#), [US Pharmacist](#) academic articles)

- # MAT Patient Releases
- TX ≤ 15 Days Post-Release
- TX ≤ 30 Days Post-Release
- TX ≤ 45 Days Post-Release



From 2019–2022, of those who had received MAT within their year of release, an average of **only 13%** had a Medicaid Emergency Room claim within 30 days of their release date.

The data provided in this infographic were analyzed by the DVHA Blueprint Team. The VTDOC used those data to create this infographic. The original report supplied by DVHA is available upon request.